

Spring 2014 LECTURE SERIES

# CHEW ON THIS

Artistic, Academic & Choreographic Presentations by World Arts and Cultures/Dance Graduate Students & Faculty

---

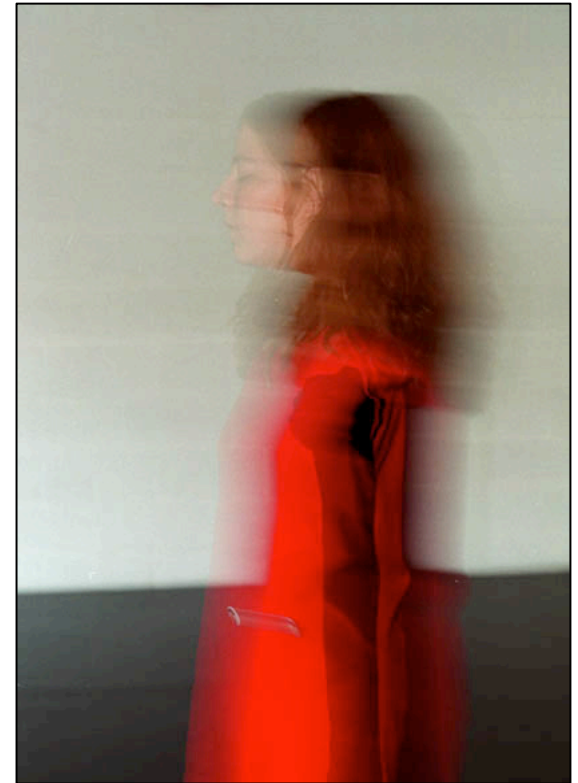
## **Impasse:** *Authoring Marginalized Bodies/Rethinking “Integrated” Dance*

By Catherine Long and Doran George

Monday, April 28<sup>th</sup>, 6:30PM,  
Kaufman Hall Room 200

*Impasse* is the reformulation for dancer Catherine Long of the multimedia solo *Stalemate* originally choreographed and performed by Doran George in 2009. By exploring how the movement component of the work manifests on their bodies, George and Long deconstruct the binary of capacity and incapacity that powerfully informs concert dance. *Impasse* explores performative and theoretical implications of how bodies generally and Long and George specifically are configured differently within ideas of dis/ability.

The performance will be followed by a talk with both artists.



Catherine Long is a performer and disability consultant who has been active in the London dance and performance scene, both in mainstream and disability arts contexts, for more than fifteen years. She recently completed a two-year residency at the Institute of Cognitive Neuroscience where she conducted research on the neurological processes and relays involved in visual, kinaesthetic and proprioceptive relationships between bodies, specifically with knowing one's own body in and through the body of another. Long is currently engaged in a studio practice of exploring and adapting movement vocabularies that prove challenging for her particular skeletal and muscular abilities in order to interrogate foundational suppositions of “integrated” dance, in which a range of differently abled performers share the stage.

Doran George has worked with Long for four years as project consultant, symposium producer, co-performer and now on the adaption of *Stalemate*. S/he is a dance artist and scholar completing a PhD at UCLA looking at the impact of Somatics on late 20<sup>th</sup> century contemporary dance. George has been working in dance and disability since 1999 when s/he began investigating connections of disability with transgender embodiment as a curator for the London International Transgender Film Festival. George also researched interfaces between disability politics and contemporary art practice under commission from the Arts Council of England, which resulted in the symposium *Vital*.