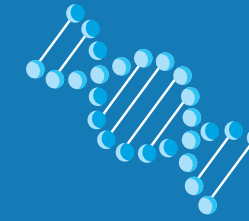
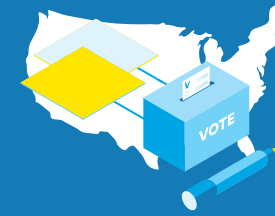


GE COURSES EACH CLUSTER SATISFIES

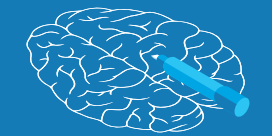
Upon completion of the Cluster program, students satisfy 4 GE requirements. The table below lists the Cluster courses for the upcoming school year, and the number of GE courses in each GE foundation area that each Cluster satisfies. Learn more at clusters.ucla.edu.

CLUSTER	FOUNDATION AREA		
	SCIENTIFIC INQUIRY	SOCIETY & CULTURE	ARTS & HUMANITIES
REQUIRED NUMBER OF GE COURSES	4	3	3
FOOD - A Lens for Environment and Sustainability (Cluster M1A,B,CW)	2 or 3	1 or 2	
RACE - Race and Indigeneity in the US (Cluster 20A,B,CW)		2	2
GLOBAL ISLAM (Cluster 27A,B,CW)		3	1
VIOLENCE - Political Violence in the Modern World: Causes, Cases and Consequences (Cluster 48A,B,C)		3	1
AMERICA IN THE '60S - Politics, Society, and Culture, 1954-1974 (Cluster 60A,B,CW)		2	2
EVOLUTION - Evolution of the Cosmos and Life (Cluster 70A,B,CW)	4		
BIOTECHNOLOGY AND SOCIETY (Cluster M71A,B,CW)	1	2	1
SEX - From Biology To Gendered Society (Cluster 72)	1	3	
BRAIN - Brain, Bodymind, and Society: All in Your Head? (Cluster 73A, B, CW)	1	1	2
AGING - Frontiers in Human Aging (Cluster 80A,B,CW)	1	3	



UCLA WHAT'S THE BIG IDEA?

UCLA CLUSTER PROGRAM



UCLA Cluster Program
Big Ideas. Community of Learners. Bruins for Success.

www.clusters.ucla.edu

UCLA CLUSTER PROGRAM

WHAT IS THE UCLA CLUSTER PROGRAM?

The UCLA Cluster Program is an innovative initiative designed to help first-year students successfully transition to UCLA. Clusters are year-long, collaboratively taught, interdisciplinary and open to entering first-year students only. Because of this, each Cluster is a Learning Community, where you can build relationships with your fellow students, your TAs and your faculty throughout a year of interaction. Clusters have been proven to provide first-year students with the tools to excel during their college career. On average, Cluster students graduate earlier and have a higher GPA when they graduate.